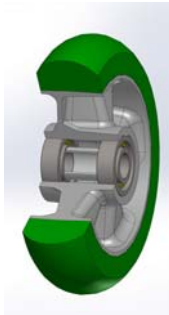


## SERIES 62ER



**“TR-ROLL” POLYURETHANE WHEELS WITH ERGONOMIC ROUND PROFILE, ALUMINIUM CENTRE SWIVEL TOP PLATE BRACKET TYPE EP**

### Wheel description



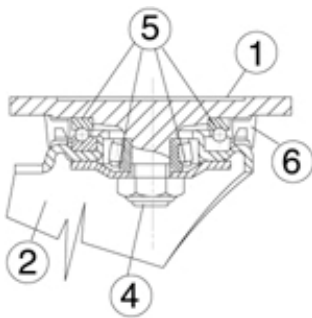
**Tread:** “TR-ROLL” polyurethane, hardness 75 Shore A.

**Centre:** cast aluminium.

**Hub:** the housing is obtained by moulding and contains ball bearings series Z.

### Bracket description

**Extra-heavy duty bracket type EP (max. load capacity 1600 daN)**



1) **Plate:** electrolytically galvanised forged steel

2) **Fork:** electrolytically galvanised steel plate

4) **Central pin:** solid with the machined plate

5) **Swivel actions:** axial ball bearing and taper roller bearing

6) **Dust seal:** orange polyethylene

**Finish:** white galvanisation

**Fitting:** top plate