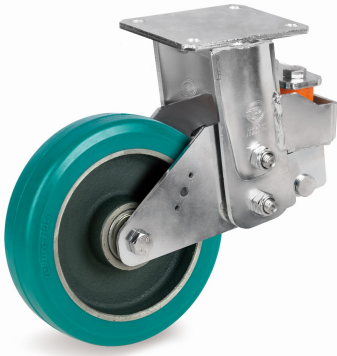
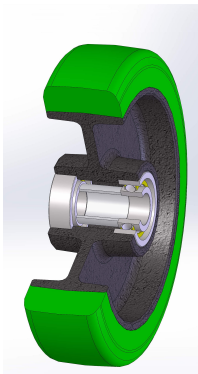


SERIE 62GH



**“TR-ROLL” POLYURETHANE WHEELS
CAST IRON CENTRE,
FIXED ELECTROWELDED SPRUNG-LOADED BRACKET
TYPE EES MHD**

Wheel description

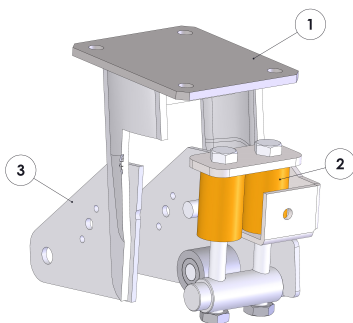


Tread: TR-ROLL polyurethane wheel, hardness 75 Shore A.

Centre: cast iron.

Hub: the housing is obtained by moulding and turning and contains ball bearings series Z

Bracket description



Electrowelded sprung-loaded bracket EES MHD-max loading capacity 1000 daN (damping up to 400 daN)

- 1) Electrolytically galvanised top plate with deep-drawn legs electrowelded to the flange
- 2) Polyurethane springs
- 3) Internal moving fork: deep-drawn legs electrowelded to the tube