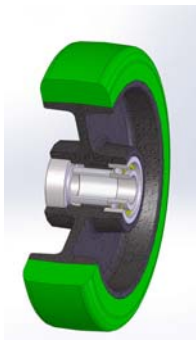


SERIES 62GH



**“TR-ROLL” POLYURETHANE WHEELS
CAST IRON CENTER,
FIXED ELECTROWELDED BRACKET TYPE EE MHD**

Wheel description



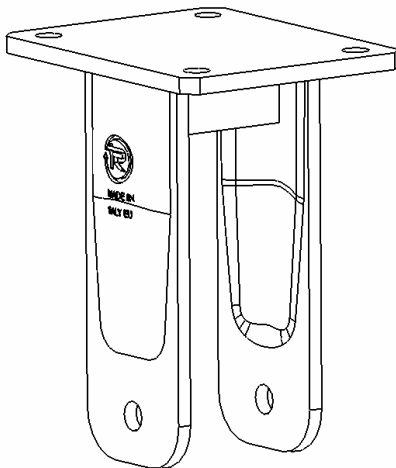
Tread: TR-ROLL polyurethane wheel, hardness 75 Shore A.

Centre: cast iron.

Hub: the housing is obtained by moulding and turning and contains ball bearings series Z

Bracket description

EE Medium Heavy Duty bracket (max. load capacity 1000 daN)



The bracket is made by a steel forged fixing plate with 4 holes, by two steel drawn sides and by a steel central stiffening. These elements are bounded by welding and properly protected against oxydation.