

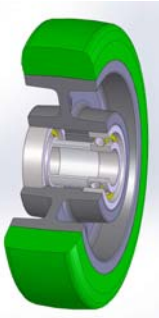
62NY SERIES



**“TR-ROLL” POLYURETHANE WHEELS, ALSO AVAILABLE WITH
ERGONOMIC ROUND PROFILE
CENTER IN POLYAMIDE 6,**



Wheel description



Tread: “TR-ROLL” polyurethane wheels, hardness 75 Shore A, excellent sliding and elasticity, good resistance to wear and tear.

Center: polyamide 6.

Hub: the housing is obtained by moulding and contains ball bearings series Z.