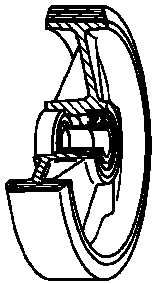




SERIES 64

**“TR” POLYURETHANE WHEELS,
CAST IRON CENTRE,
SWIVEL TOP PLATE BRACKET TYPE EE HD
WITH REAR ADJUSTABLE BRAKE**

Wheel description



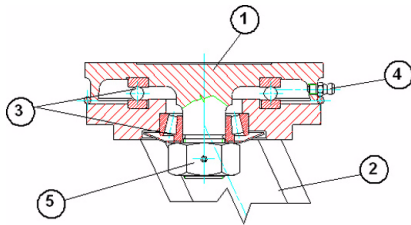
Tread: “TR” polyurethane, hardness 95 +/- 3 Shore A.

Centre: cast iron.

Hub: the housing is obtained by moulding and turning and contains ball bearings series Z

Bracket description

EE Heavy Duty bracket (max. load capacity 2500 daN)

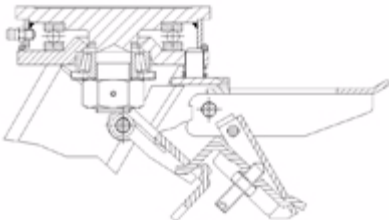


- 1) **Plate:** forged steel with integrated pin
- 2) **Fork:** drawn sides electrowelded to the flange
- 3) **Swivel actions:** axial ball bearing and taper roller bearing
- 4) **Lubricator**
- 5) **Nut anti-loosening system**

Finish: dark green powder coating

Fitting: top plate

Brake description



Rear adjustable brake

Double-action brake that locks the wheel and the castor at the same time. The brake is efficient and easy to use: a simple top-to-bottom movement using the tip of the foot on two independent pedals is all that's needed to engage and release the lock quickly and smoothly. Locking force can be adjusted using an M8 socket screw.