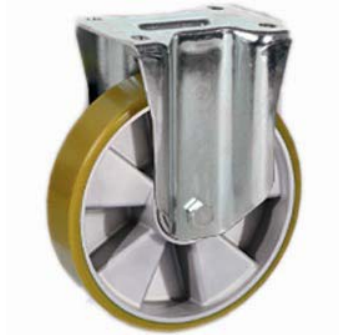
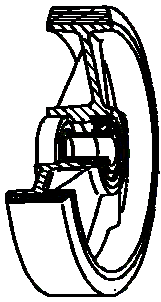


SERIES 65



**“TR” POLYURETHANE WHEELS,
ALUMINIUM CENTRE,
FIXED BRACKET TYPE “M”**

Wheel description



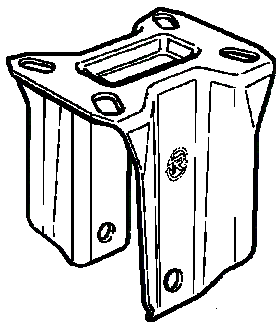
Tread: “TR” polyurethane, hardness 93 +/- 5 Shore A, excellent rolling resistance and elasticity, good resistance to wear and to tearing.

Centre: aluminium.

Hub: the housing is obtained by moulding and contains ball bearings series Z.

Bracket description

Medium duty bracket type M (max. carrying capacity 500 daN)



The bracket is made by a galvanised steel fork.