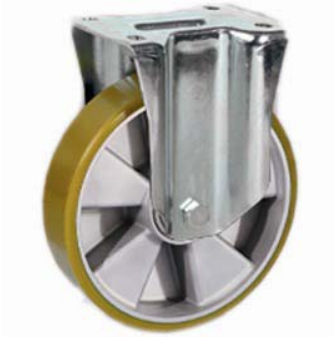
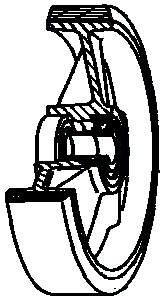


SERIES 65



**“TR” POLYURETHANE WHEELS,
ALUMINIUM CENTRE,
FIXED BRACKET TYPE “NL”**

Wheel description



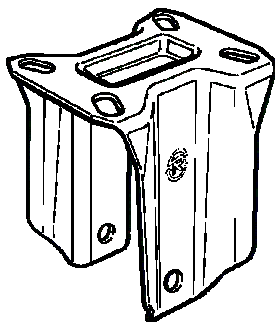
Tread: “TR” polyurethane, hardness 93 +/- 5 Shore A, excellent rolling resistance and elasticity, good resistance to wear and to tearing.

Centre: aluminium.

Hub: the housing is obtained by moulding and contains ball bearings series Z.

Bracket description

Standard duty bracket type NL (max. carrying capacity 400 daN)



The bracket is made by an electrolytically galvanised steel fork.