

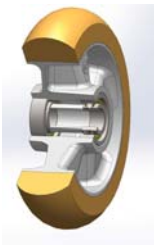
## SERIES 65ER



**THICK “TR” POLYURETHANE WHEELS WITH  
ERGONOMIC ROUND PROFILE,  
ALUMINIUM CENTRE,  
FIXED BRACKET TYPE EE MHD**

---

### **Wheel description**



**Tread:** Thick TR polyurethane wheels with round ergonomic profile, hardness 95 Shore A.

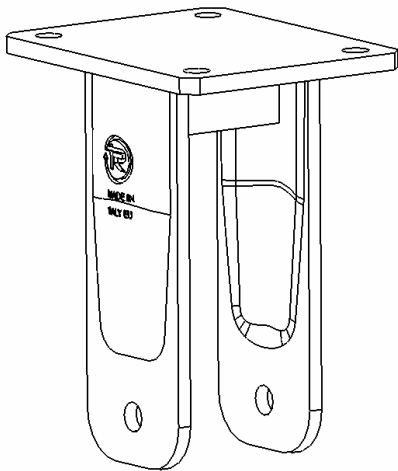
**Centre:** cast aluminium

**Hub:** the housing is obtained by moulding and contains ball bearings series Z.

---

### **Bracket description**

**EE Medium Heavy Duty bracket (max. load capacity 1000 daN)**



The bracket is made by a steel forged fixing plate with 4 holes, by two steel drawn sides and by a steel central stiffening. These elements are bounded by welding and properly protected against oxydation.