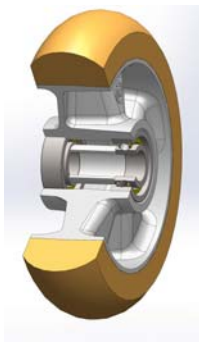


## SERIES 65ER



**THICK “TR” POLYURETHANE WHEELS WITH  
ERGONOMIC ROUND PROFILE,  
ALUMINIUM CENTRE,  
SWIVEL TOP PLATE BRACKET TYPE EP**

### *Wheels description*



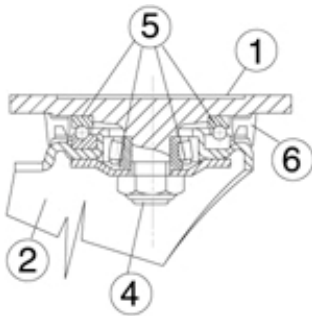
**Tread:** Thick TR polyurethane wheels with round ergonomic profile, hardness 95 Shore A.

**Centre:** cast aluminium

**Hub:** the housing is obtained by moulding and contains ball bearings series Z.

### *Bracket description*

**Extra-heavy duty bracket type EP (max. load capacity 1600 daN)**



1) **Plate:** electrolytically galvanised forged steel

2) **Fork:** electrolytically galvanised steel plate

4) **Central pin:** solid with the machined plate

5) **Swivel actions:** axial ball bearing and taper roller bearing

6) **Dust seal:** orange polyethylene

**Finish:** white galvanisation

**Fitting:** top plate