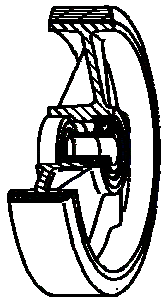


SERIES 65



**“TR” POLYURETHANE WHEELS,
CAST IRON CENTRE,
SWIVEL BOLT HOLE BRACKET TYPE “NL”**

Wheel description

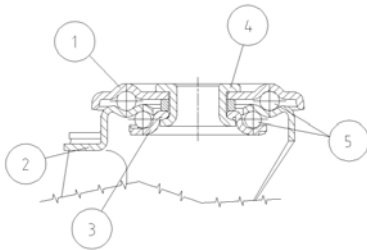


Tread: “TR” polyurethane, hardness 93 +/- 5 Shore A, excellent rolling resistance and elasticity, good resistance to wear and to tearing.

Centre: cast iron.

Hub: the housing is obtained by turning and contains ball bearings series Z.

Bracket description



Standard duty bracket type NL (max. carrying capacity 400 daN)

1) **Plate:** electrolytically galvanised steel plate

2) **Fork:** electrolytically galvanised steel plate

3) **Ball Racing Ring:** electrolytically galvanised steel plate

4) **King Pin:** incorporated in top plate and cold riveted

5) **Swivel actions:** double ring of greased balls

Finishing: electrolytic galvanisation

Fitting: bolt hole