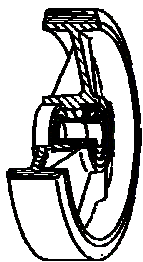


SERIES 65



**“TR” POLYURETHANE WHEELS,
CAST IRON CENTRE,
SWIVEL TOP PLATE BRACKET TYPE “NL” WITH BRAKE**

Wheel description

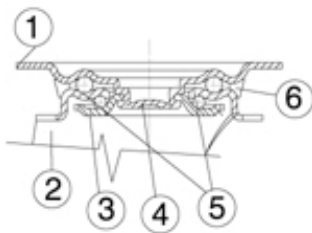


Tread: “TR” polyurethane, hardness 93 +/- 5 Shore A, excellent rolling resistance and elasticity, good resistance to wear and to tearing.

Centre: cast iron.

Hub: the housing is obtained by turning and contains ball bearings series Z.

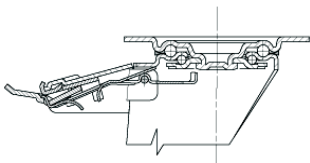
Bracket description



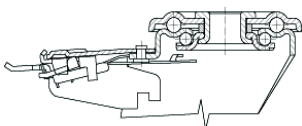
Standard duty bracket type NL (max. carrying capacity 400 daN)

- 1) **Plate:** electrolytically galvanised steel plate
 - 2) **Fork:** electrolytically galvanised steel plate
 - 3) **Ball Racing Ring:** electrolytically galvanised steel plate
 - 4) **King Pin:** incorporated in top plate and cold riveted
 - 5) **Swivel actions:** double ring of greased balls
 - 6) **Dust seal:** orange polyethylene
- Finishing:** electrolytic galvanisation
Fitting: top plate

Brake description



Diameters 80-150 mm



Diameters 150-200 mm

Front-locking brake

This brake fully locks wheel and castor rotation.

Thanks to its optimised dimensions and fold-away pedal, the brake is easy to engage and extremely compact.

The hardened carbon steel spring has very high corrosion resistance.