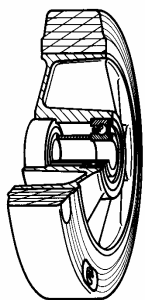


## SERIES 72



### SIGMA ELASTIC RUBBER WHEELS ALUMINIUM CENTRE SWIVEL TOP PLATE BRACKET TYPE "NL" WITH BRAKE

#### Wheel description



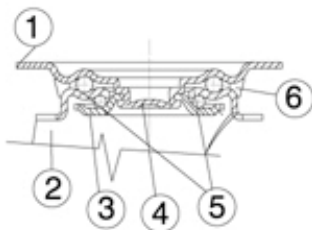
**Tread:** Sigma Elastic rubber tread; hardness 70 +/-3 Shore A.

**Centre:** aluminium.

**Hub:** The housing is obtained by moulding and contains ball bearings series Z.

#### Bracket description

**Standard duty bracket type NL (max. carrying capacity 400 daN)**



1) **Plate:** electrolytically galvanised steel plate

2) **Fork:** electrolytically galvanised steel plate

3) **Ball Racing Ring:** electrolytically galvanised steel plate

4) **King Pin:** incorporated in top plate and cold riveted

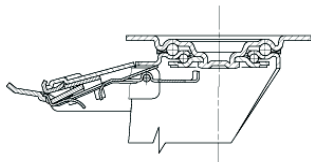
5) **Swivel actions:** double ring of greased balls

6) **Dust seal:** orange polyethylene

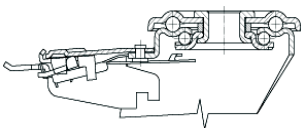
**Finishing:** electrolytic galvanisation

**Fitting:** top plate

#### Brake description



**Diameters 80-150 mm**



**Diameters 150-200 mm**

#### Front-locking brake

This brake fully locks wheel and castor rotation.

Thanks to its optimised dimensions and fold-away pedal, the brake is easy to engage and extremely compact.

The hardened carbon steel spring has very high corrosion resistance.