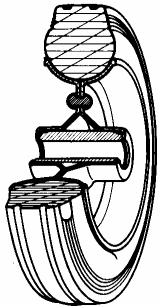


## SERIES 53



### STANDARD RUBBER WHEELS PRESSED STEEL DISCS CENTRE SWIVEL BOLT HOLE BRACKET TYPE "NL"

#### Wheel description



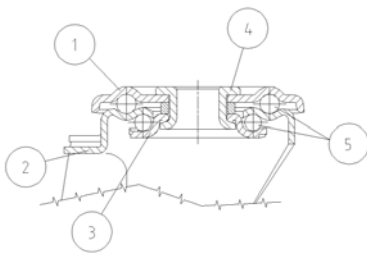
**Tread:** Standard rubber tread; hardness 85 +/-3 Shore A.

**Centre:** made of two riveted galvanized pressed steel discs.

**Hub:** the hub is available with plain bore and with roller bearings.

#### Bracket description

**Standard duty bracket type NL (max. carrying capacity 400 daN)**



1) **Plate:** electrolytically galvanised steel plate

2) **Fork:** electrolytically galvanised steel plate

3) **Ball Racing Ring:** electrolytically galvanised steel plate

4) **King Pin:** incorporated in top plate and cold riveted

5) **Swivel actions:** double ring of greased balls

**Finishing:** electrolytic galvanisation

**Fitting:** bolt hole