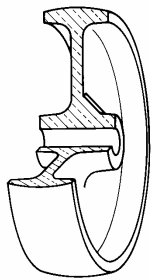


SERIES 68



SOLID POLYAMIDE 6 WHEELS SWIVEL TOP PLATE BRACKET TYPE "NLX" AND BRAKE

Wheel description

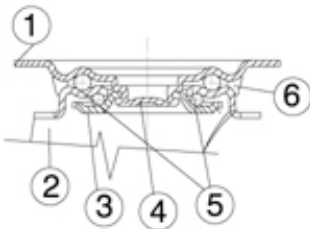


Tread: solid polyamide 6 wheels.

Hub: the hub is available with plain bearing and with stainless steel roller bearing.

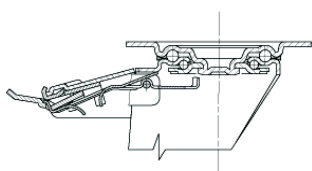
Bracket description

Standard duty bracket type NLX (max. carrying capacity 400 daN)

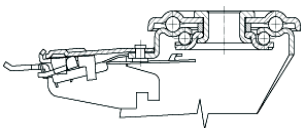


- 1) **Plate:** AISI 304 stainless steel
 - 2) **Fork:** AISI 304 stainless steel
 - 3) **Ball Racing Ring:** AISI 304 stainless steel
 - 4) **King Pin:** incorporated in top plate and cold riveted
 - 5) **Swivel actions:** double ring of greased balls
 - 6) **Dust seal:** orange polyethylene
- Fitting:** top plate

Brake description



Diameters 80-150 mm



Diameters 150-200 mm

Front-locking brake

This brake fully locks wheel and castor rotation.

Thanks to its optimised dimensions and fold-away pedal, the brake is easy to engage and extremely compact.

The stainless steel spring has very high corrosion resistance.