

## TWIN 32 SERIES



### TWIN POLYAMIDE 6 SOLID WHEELS SWIVEL STEM BRACKET WITH FRONT LOCKING BRAKE

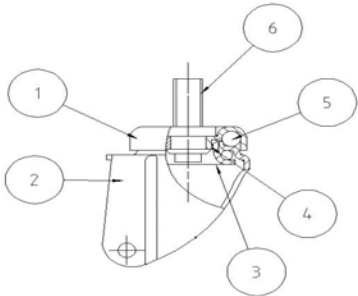
#### Wheel description



- Wheel:** solid polyamide 6 wheels.  
**Hub:** the hub is available with plain bearing.

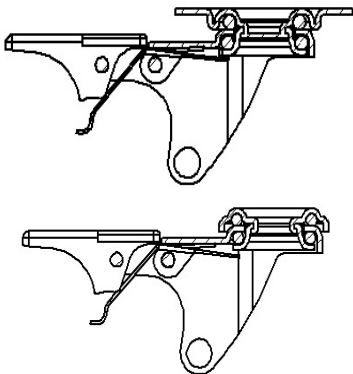
#### Bracket description

Light duty bracket (max. carrying capacity 90 daN)



- 1) **Plate:** electrolytically galvanised steel plate
  - 2) **Fork:** electrolytically galvanised steel plate
  - 3) **Ball Racing Ring:** electrolytically galvanised steel plate
  - 4) **King Pin:** incorporated in top plate and cold riveted
  - 5) **Swivel actions:** double ring of greased balls
  - 6) **Fitting:** stem
- Finishing:** electrolytic galvanisation

#### Brake description



#### Front-locking brake

This brake fully locks wheel and castor rotation.  
The hardened carbon steel spring has very high corrosion resistance.