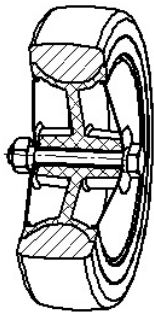


## SERIES 37



### GREY RUBBER INSTITUTIONAL WHEELS POLYAMIDE CENTRE WITH THREADGUARDS SWIVEL BRACKETS WITH STEM

#### Wheel description



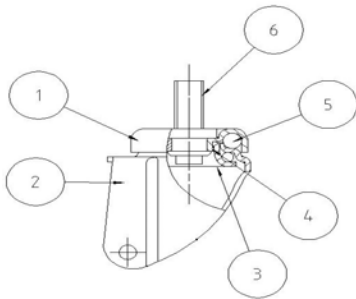
**Tread:** grey non-marking rubber tread.

**Centre:** polyamide centre with threadguards.

**Hub:** the plain bearing bore results from a hole in the material forming the centre of the wheel and contains the axle.

#### Bracket description

Light duty bracket (max. carrying capacity 80 daN)



- 1) **Plate:** electrolytically galvanised steel plate
  - 2) **Fork:** electrolytically galvanised steel plate
  - 3) **Ball Racing Ring:** electrolytically galvanised steel plate
  - 4) **King Pin:** incorporated in top plate and cold riveted
  - 5) **Swivel actions:** double ring of greased balls
  - 6) **Fitting:** stem
- Finishing:** electrolytic galvanisation