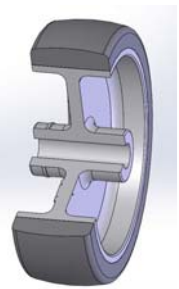


## SERIES 38



### GREY NON-MARKING THERMOPLASTIC RUBBER WHEELS, POLYPROPYLENE CENTRE SWIVEL BRACKETS WITH STEM

#### Wheel description



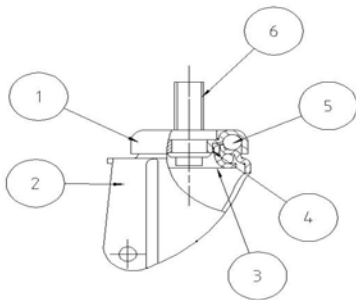
**Tread:** grey non-marking thermoplastic rubber tread.

**Centre:** in polypropylene

**Hub:** the plain bearing bore results from a hole in the material forming the centre of the wheel and contains the axle.

#### Bracket description

**Light duty bracket (max. carrying capacity 70 daN)**



- 1) **Plate:** electrolytically galvanised steel plate
  - 2) **Fork:** electrolytically galvanised steel plate
  - 3) **Ball Racing Ring:** electrolytically galvanised steel plate
  - 4) **King Pin:** incorporated in top plate and cold riveted
  - 5) **Swivel actions:** double ring of greased balls
  - 6) **Fitting:** stem
- Finishing:** electrolytic galvanisation