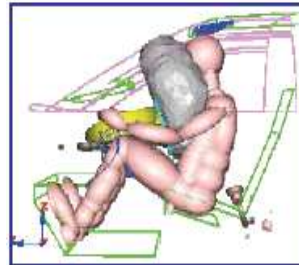


Design



- Aerospace
- Automotive
- Nuclear
- Telescopes
- Safety systems for vehicle occupants
- New concept & prototypes

Advanced Simulations



- Full scale crash
- Biomechanical safety
- Acoustic & vibration comfort
- Advanced statics & dynamics
- Thermal & thermo-mechanical
- 3D Aerodynamics & fluid dynamics
- Handling comfort

Robotics



- Design of remote handling devices for inspection & maintenance in hard rad environments
- Design of remote handling devices for nuclear plants decommissioning
- Remote tooling

Software & Controls



- Advanced human-machine interfaces
- Control logic design for thermal-hydraulic devices
- PLC programming

S.R.S Engineering Design S.r.l. Sede Legale: Via Governo Vecchio, 14 - 00186 Roma Cap.Soc. Euro 26.000,00 int. vers. - P.Iva e CF 05400631007

Sede Operativa di Roma
Sede Operativa di Torino
Sede Operativa di Modena
Sede Operativa di Napoli

V.lo delle Palle, 25-25/B - 00186 Roma
C.so Unione Sovietica, 612/15A - 10135 Torino
Via Tazio Nuvolari, 55 - 41053 Maranello (MO)
Via Passariello, 179 - Pomigliano D'Arco (NA)

Tel. (+39) 06 6810061 Fax. (+39) 06 6868662
Tel. (+39) 011 3916211 Fax. (+39) 011 3916212
Tel.& Fax. (+39) 0536 947004
Tel.& Fax. (+39) 081 8844701