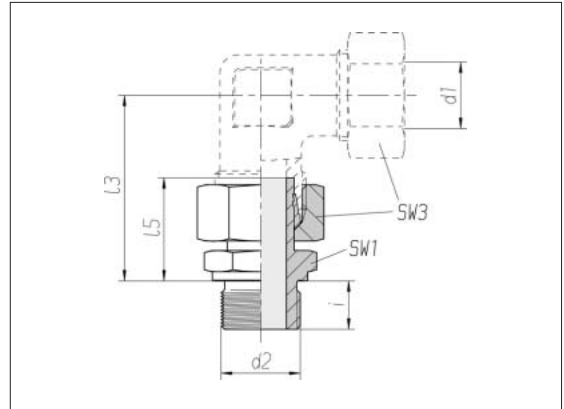


Straight stud standpipe adapters

Thread:
metric fine thread,
straight

Sealed with seal edge

Tube socket pre-assembled



Series Tube OD d1	Pressure	d2	SW1	SW3	l3	l5	i	Nm -10 %	kg/100 approx.	Order No.
L 6	PN 315	M 10 x 1	14	14	36.5	24.5	8	20	2.4	0 1 64 03 20 07**
L 8	PN 315	M 12 x 1.5	17	17	40.5	26.5	12	30	4.0	0 1 64 08 20 07
L 10	PN 315	M 14 x 1.5	19	19	42.5	27.5	12	50	4.9	0 1 64 13 20 07
L 12	PN 315	M 16 x 1.5	22	22	47.5	30.5	12	70	6.8	0 1 64 18 20 07
L 12	PN 315	M 18 x 1.5	24	22	47.5	30.5	12	90	7.8	1 1 99 17 20 07
L 12	PN 315	M 22 x 1.5	27	22	49	32	14	140	10.8	0 1 85 71 20 07
L 15	PN 315	M 18 x 1.5	24	27	52.5	31.5	12	90	9.8	0 1 64 23 20 07
L 18	PN 315	M 22 x 1.5	27	32	55	31.5	14	140	14.0	0 1 64 28 20 07
L 22	PN 160	M 26 x 1.5	32	36	60	32.5	16	190	19.6	0 1 64 33 20 07
L 28	PN 160	M 33 x 2	41	41	65.5	35	18	300	26.9	0 1 64 38 20 07
L 35	PN 160	M 42 x 2	50	50	77	42.5	20	500	45.7	0 1 64 43 20 07
L 42	PN 160	M 48 x 2	55	60	86.5	46.5	22	600	60.7	0 1 64 48 20 07
S 6	PB 630*	M 12 x 1.5	17	17	43	27	12	45	4.4	0 1 64 53 20 07
S 8	PB 630*	M 14 x 1.5	19	19	46.5	29.5	12	60	6.0	0 1 64 58 20 07
S 10	PB 630*	M 16 x 1.5	22	22	49.5	32	12	80	8.3	0 1 64 63 20 07
S 12	PB 630*	M 18 x 1.5	24	24	55.5	34	12	120	11.0	0 1 64 68 20 07
S 14	PB 630*	M 20 x 1.5	27	27	58.5	36.5	14	160	14.7	0 1 64 73 20 07
S 16	PB 400	M 22 x 1.5	27	30	61.5	37	14	170	17.0	0 1 64 78 20 07
S 20	PB 400	M 27 x 2	32	36	69.5	43	16	280	25.3	0 1 64 83 20 07
S 25	PB 400	M 33 x 2	41	46	78	48	18	450	48.8	0 1 64 88 20 07
S 30	PB 250	M 42 x 2	50	50	86.5	51	20	540	65.9	0 1 64 93 20 07
S 38	PB 250	M 48 x 2	55	60	101	60	22	700	95.2	0 1 64 98 20 07

* Safety factor 2.0

** Sample product code, see:
EVGE06LM