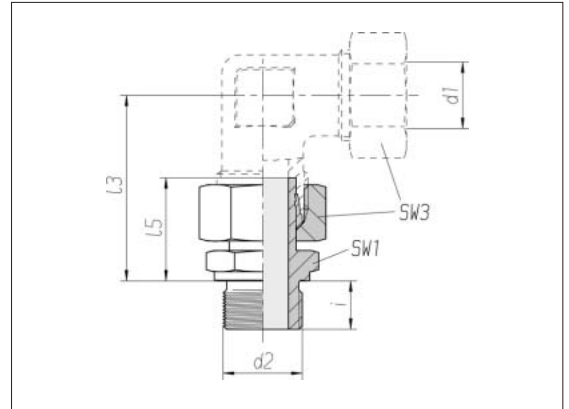


## Straight stud standpipe adapters

Thread:  
Whitworth pipe thread,  
straight

Sealed with seal edge

Tube socket pre-assembled



Series	Pressure	d2		SW1	SW3	l3	l5	i	Nm -10 %	kg/100 approx.	Order No.
L 6	PN 315	G 1/8 A		14	14	36.5	24.5	8	20	2.4	0 1 65 03 20 07*
L 8	PN 315	G 1/4 A		19	17	43.5	29.5	12	50	4.6	0 1 65 08 20 07
L 10	PN 315	G 1/4 A		19	19	42.5	27.5	12	50	5.1	0 1 65 13 20 07
L 12	PN 315	G 1/4 A		19	22	50.5	33.5	12	50	7.0	0 1 97 37 20 07
L 12	PN 315	G 3/8 A		22	22	51	34	12	80	8.2	0 1 65 18 20 07
L 12	PN 315	G 1/2 A		27	22	51.5	34.5	14	140	9.8	0 1 97 38 20 07
L 15	PN 315	G 3/8 A		22	27	52.5	31.5	12	80	9.6	0 1 86 04 20 07
L 15	PN 315	G 1/2 A		27	27	53	32	14	140	11.9	0 1 65 23 20 07
L 18	PN 315	G 1/2 A		27	32	55	31.5	14	140	13.6	0 1 65 28 20 07
L 22	PN 160	G 3/4 A		32	36	60	32.5	16	190	18.7	0 1 65 33 20 07
L 28	PN 160	G 1 A		41	41	65.5	35	18	330	27.1	0 1 65 38 20 07
L 35	PN 160	G 1 1/4 A		50	50	77	42.5	20	540	44.8	0 1 65 43 20 07
L 42	PN 160	G 1 1/2 A		55	60	86.5	46.5	22	630	60.7	0 1 65 48 20 07
S 6	PB 630	G 1/4 A		19	17	43	27	12	60	4.9	0 1 65 53 20 07
S 8	PB 630	G 1/4 A		19	19	46.5	29.5	12	60	5.8	0 1 65 58 20 07
S 10	PB 630	G 3/8 A		22	22	49.5	32	12	100	8.7	0 1 65 63 20 07
S 12	PB 630	G 1/4 A		19	24	55	33.5	12	60	8.4	0 1 94 24 20 07
S 12	PB 630	G 3/8 A		22	24	55.5	34	12	100	10.0	0 1 65 68 20 07
S 14	PB 630	G 1/2 A		27	27	58.5	36.5	14	160	15.4	0 1 65 73 20 07
S 16	PB 400	G 1/2 A		27	30	61.5	37	14	160	16.3	0 1 65 78 20 07
S 20	PB 400	G 3/4 A		32	36	69.5	43	16	280	26.0	0 1 65 83 20 07
S 25	PB 400	G 1 A		41	46	78	48	18	440	48.5	0 1 65 88 20 07
S 30	PB 250	G 1 1/4 A		50	50	86.5	51	20	580	67.2	0 1 65 93 20 07
S 38	PB 250	G 1 1/2 A		55	60	101	60	22	700	96.9	0 1 65 98 20 07

\* Sample product code, see:  
EVGE06LR