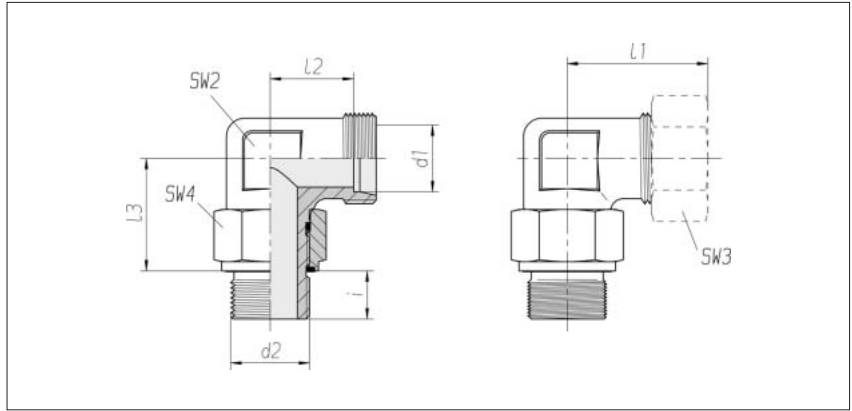


Adjustable elbow couplings with lock nut

Thread:
metric fine thread,
straight

Sealed with PEFLEX seal



Series Tube OD d1	Pressure	d2	SW2	SW3	SW4	l1* approx.	l2	l3	i	kg/100 approx.	Order No. Single component	Order No. **
L 6	PN 315	M 10 x 1	14	14	14	29	14	21.5	8	4.4	1 1 13 00 20 81	1 1 13 00 20 XX
L 6	PN 315	M 12 x 1.5	14	14	17	29	14	24.5	12	5.8	1 1 13 01 20 81	1 1 13 01 20 XX
L 6	PN 315	M 14 x 1.5	17	14	19	31	16	27	12	8.1	1 1 13 02 20 81	1 1 13 02 20 XX
L 8	PN 315	M 12 x 1.5	14	17	17	31	16	24.5	12	6.1	1 1 13 05 20 81	1 1 13 05 20 XX
L 10	PN 315	M 14 x 1.5	17	19	19	32	17	27	12	7.4	1 1 13 10 20 81	1 1 13 10 20 XX
L 12	PN 315	M 16 x 1.5	17	22	22	36	17	28	12	9.6	1 1 13 15 20 81	1 1 13 15 20 XX
L 12	PN 315	M 18 x 1.5	22	22	24	36	21	30	12	14.6	1 1 13 16 20 81	1 1 13 16 20 XX
L 15	PN 315	M 18 x 1.5	22	27	24	36	21	30	12	13.7	1 1 13 20 20 81	1 1 13 20 20 XX
L 15	PN 315	M 22 x 1.5	22	27	27	37	22	32	14	16.4	1 1 13 21 20 81	1 1 13 21 20 XX
L 18	PN 315	M 22 x 1.5	27	32	27	42	25.5	35.5	14	24.6	1 1 13 25 20 81	1 1 13 25 20 XX
L 18	PN 315	M 18 x 1.5	24	32	24	40	23.5	34	12	16.1	1 1 13 26 20 81	1 1 13 26 20 XX
L 18	PN 160	M 26 x 1.5	27	32	32	42	25.5	37	16	27.0	1 1 13 27 20 81	1 1 13 27 20 XX
L 22	PN 160	M 27 x 2	27	36	32	44	27.5	40	16	27.9	1 1 13 30 20 81	1 1 13 30 20 XX
L 22	PN 160	M 26 x 1.5	27	36	32	44	27.5	37	16	24.2	1 1 13 31 20 81	1 1 13 31 20 XX
L 28	PN 160	M 33 x 2	41	41	41	49	32.5	50.5	18	65.9	1 1 13 35 20 81	1 1 13 35 20 XX
L 28	PN 160	M 26 x 1.5	36	41	32	47	30.5	43	16	36.3	1 1 13 36 20 81	1 1 13 36 20 XX
L 35	PN 160	M 42 x 2	50	50	50	59.5	36	55.5	20	103.9	1 1 13 40 20 81	1 1 13 40 20 XX
L 42	PN 160	M 48 x 2	50	60	55	63	40	57.5	22	106.4	1 1 13 45 20 81	1 1 13 45 20 XX

Supplementary to Order No. for complete fitting tube connection	Supplementary to Order No.
2S	07
ES-4	09
BV-10	Refer to the front page

* Apply to complete fittings with
2S or ES-4 tube connection
components.
For BV-10 Refer to the front page.

** With union nut and 2S, ES-4
or BV-10 tube connection
components