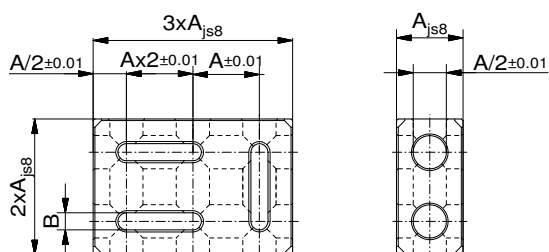


## Bar 1D

for positioning in 1 axis independent of grid

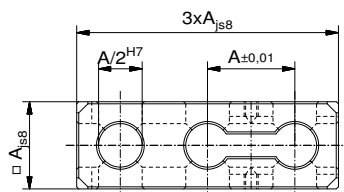
Nr.	A (AF)	B	
20114	16	4,1	20
23233	25	6,8	80
23279	40	10,8	320
28040	50	13,7	625



## Base plate 2D

for positioning in 2 axes independent of grid

Nr.	A (AF)	B	
20397	16	4,1	40
23232	25	6,8	160
23280	40	10,8	1.090
28342	50	13,7	1.266



## Bar with 1 offset unit

fine adjustment with a screw connection in 1 axis

Nr.	A (AF)	
81021	25	81
81022	40	347
82764	50	800

