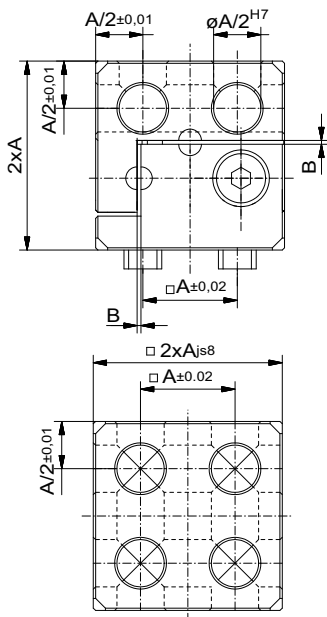




ALUFIX shim blocks

Adjustment in X,Y,Z takes place by inserting or removing shim foils or shims. After adjustment settings are fixed using pins.

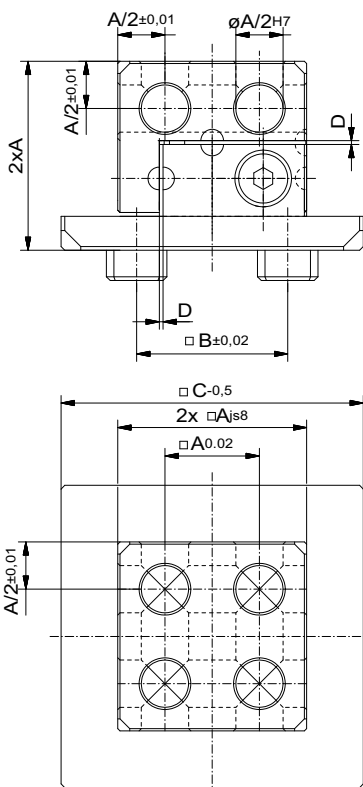
Values shown in the chart for range of adjustment are maximal values for one axis. Values in brackets show adjustment range when using more than one axis simultaneously.



3D Shim block AF

for fine adjustment in 3 axes X,Y,Z, using shim foils (page 78).

Nr.	øE/D (AF)	A x B x C	shift	
89177	12,5/25	50x50x50	x,y,z: +/- 1,0 (0,7)	294
89178	20/40	80x80x80	x,y,z: +/- 1,6 (1,1)	1.100
89179	25/50	100x100x100	x,y,z: +/- 2,0 (1,4)	2.326



3D Shim block, reducer

for fine adjustment in 3 axes X,Y,Z, using shim foils (page 78).

Nr.	E (AF)	A x B x C x D	F	shift	Typ	
91837	40/25	50x50x50x80	12,5	x,y,z: +/- 1,0 (0,7)	left	537
280764	40/25	50x50x50x80	12,5	x,y,z: +/- 1,0 (0,7)	right	537
91838	50/25	50x50x50x100	12,5	x,y,z: +/- 1,0 (0,7)		632

