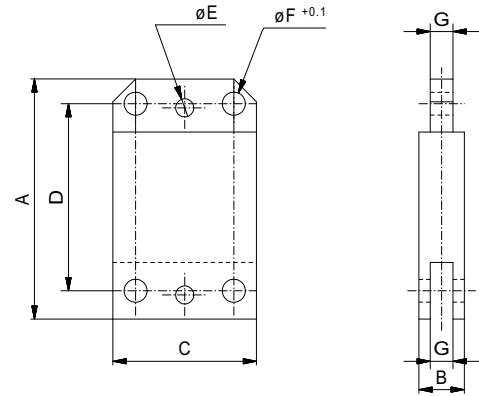


Extension

for clamp

Nr.	A	B	C	D	E	F	G	
34408	64	12	38	50	4.8	6.1	6	60

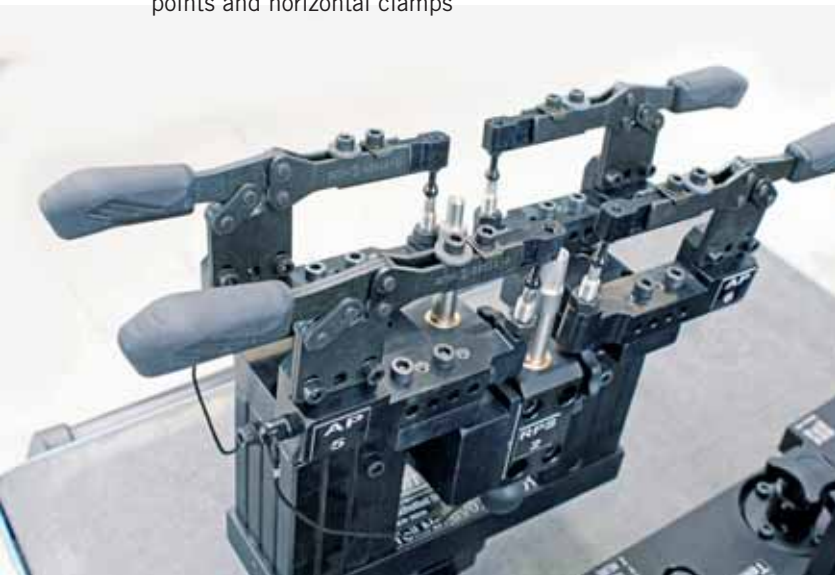


Clamp units, vertical

Clamp units shown on previous pages are also available with vertical toggle clamps on request



Application example:
Clamp units with adjustable ball points and horizontal clamps



Application example:
Clamp unit with meistersock screw and horizontal clamp with fork clamp



ALUFIX CLASSIC elements can be anodized in different colours. The colour natural is standard, black (-1) is available as an alternative. Other colours on request.

Other dimensions on request
Toggle clamps included in supply are available in silver or black.

