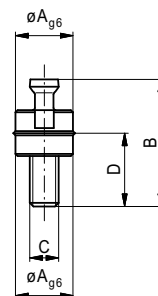


## Combi bolt

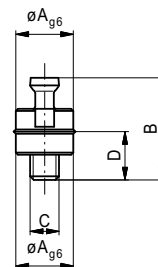
Nr.	System	A	B	C	D	
23249	AF 16	8	17,7	M4	10,2	3
23225	AF 25	12,5	28	M6	16	12
23259	AF 40	20	44	M10	25,5	64
27543	AF 50	25	55,1	M12	32	98



## Combi bolt

shortened

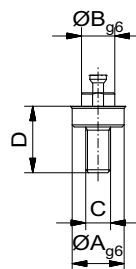
Nr.	System	A	B	C	D	
25742	AF 16	8	14,2	M4	6,7	1
25743	AF 25	12,5	22,4	M6	10,5	10
25744	AF 40	20	23,5	M10	17	61
28176	AF 50	25	44	M12	21	94



## Combi reducer bolt

for connecting different system sizes

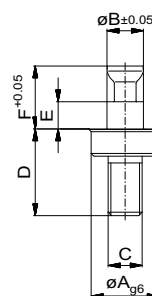
Nr.	System	A	B	C	D	
23620	AF 25/AF 16	12,5	8	M6	16	10
23621	AF 40/AF 25	20	12,5	M10	25,5	33
54400	AF 50/AF 25	25	12,5	M12	32	60
28056	AF 50/AF 40	25	20	M12	32	120



## Combi bolt

AF40, for 1D bar and 2D base plate

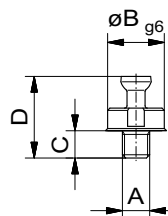
Nr.	System	A	B	C	D	E	F	
25948	AF 25	12,5	6,7	M6	16	5	11,8	24
120510	AF 40	20	10,7	M10	25,5	8	18,5	38



## Combi bolt

for grid plate without fitted bore and keyless chuck

Nr.	System	A	B	C	D	
25746	AF16	M4	8	3,5	11	2
25654	AF25	M6	12,5	6	18	10
54587	AF25	1/4"-20	12,5	12	24	10
54589	AF25	3/8"-16	12,5	12	24	12
51843	AF25	M8	12,5	6	18	12
54588	AF25	M8	12,5	12	24	15
25747	AF40	M10	20	808	27,3	40
27821	AF50	M12	25	11	34,1	80
34763	AF50	M12	25	20	43,1	90



Other versions on request