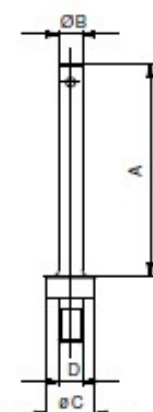




Hold-down column

self-locking

Nr.	A	B	C	D	
20338-1	35	3,9	8	46	3
22259-1	55	5,9	8	66	5



Hold-down column

with thread

Nr.	A	B	C	D	E	
20339-1	35	3,9	8	M4	46	3
22262-1	55	5,9	8	M4	66	5

for connection using crosspiece (p. 38)



Hold-down column

with shortened thread

Nr.	A	B	C	D	E	
327460-1	37,2	M4	8	3,9	4,8	3

for connection using crosspiece (p. 38)



Hold down column with thread mounted using crosspiece nut