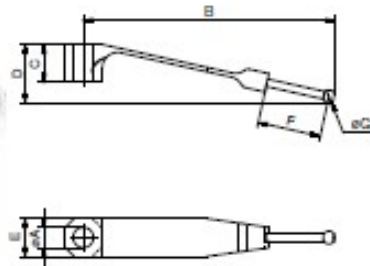


Hold-down spring

tapered

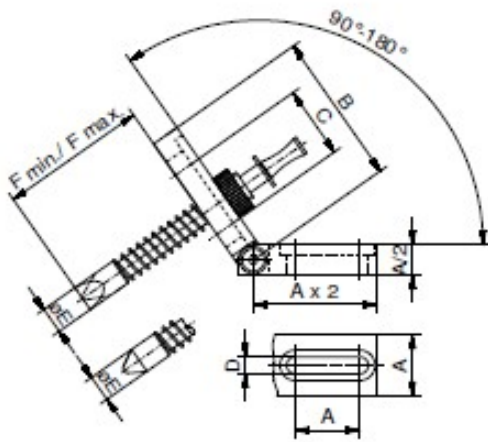
Nr.	A	B	C	D	E	F	
326970-1	ø4	37	7,5	8,7	7,5	2	1



Hold-down spring

with ball point

Nr.	A	B	C	D	E	F	G	
284708-1	ø4	49,5	7,5	11,5	7,5	12,5	ø2,5	2



Push rod NewXS 16

spring loaded

Nr.	A	B	C	D	E	Fmin.	Fmax.	
284477-1	16	40	19	4,5	ø7	25	50	23

