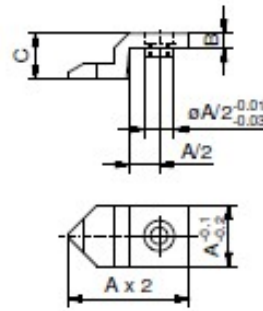


Stop NewXS 16

pointed

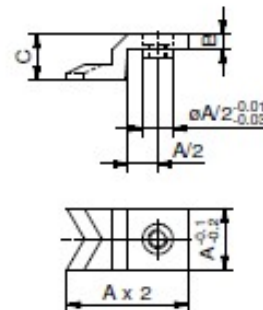
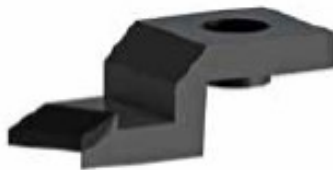
Nr.	A	B	C	
326741-1	16	4	12	9



Stop NewXS 16

Prismatic

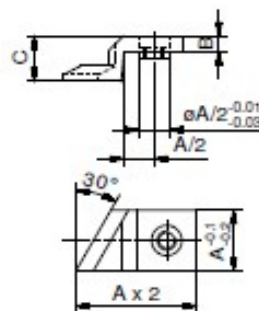
Nr.	A	B	C	
326751-1	16	4	12	9



Stop NewXS 16

angled

Nr.	A	B	C	Type	
324204-1	12	4	12,0	left	8
324318-1	12	4	12,0	right	8



All NewXS stops have a pull-off thread M5