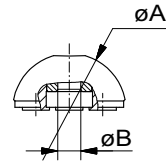
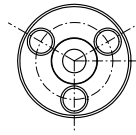


FX adapter

magnetic, with fixing sleeve

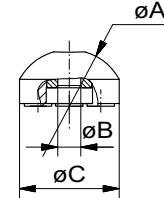
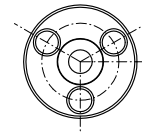
	Nr	A	B		
◆	84840	25	5,1	(M5)	11
◆	84833	30	5,1	(M5)	20
◆	84841	25	6,1	(M6)	10
◆	84834	30	6,1	(M6)	17
	84825	35	5,1	(M5)	33
◆	84835	30	8,1	(M8)	20
	84826	35	6,1	(M6)	33
	84836	30	10,1	(M10)	17
	84827	35	8,1	(M8)	31
	84828	35	10,1	(M10)	29



FX adapter

magnetic, elongated, with fixing sleeve

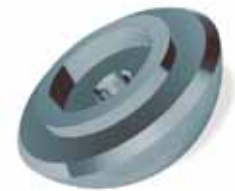
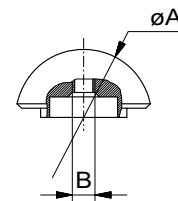
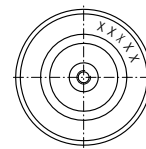
	Nr.	A	B	C	
	84846	25	5,1	(M5)	22
	84847	25	6,1	(M6)	22



FX Adapter

with through thread

	Nr	A	B	
	51110	30	M4	20
	32025 *)	30	M5x1,5875	20
	54957	30	M5	10
	32026	30	M6	10
	32027	30	M8	14
	32028	30	M10	10
	55333	25	M4	10
	32033 *)	25	M5x1,5875	9
	54956	25	M5	9
◆	32034	25	M6	10
◆	32035	25	M8	10
◆	32036	25	M10	10



*) For welded bolts, double thread, only one turn cut

Preference item:
Articles with green diamond →
are available ex stock!



FIXINSPECT measuring accessories are available anodized in different colours. Red is standard, other colours on request.