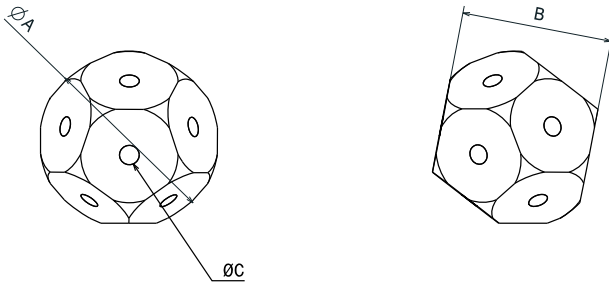


PG adapter „dodecahedron“

with fixing hole Dia 8^{H7}

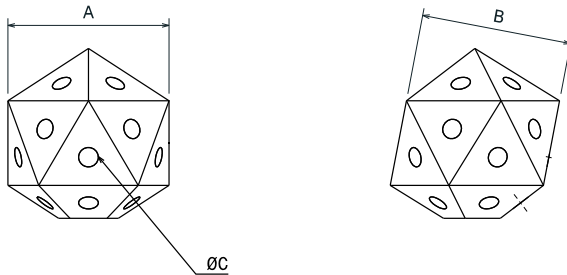
Nr.	A	B	C	
283759	50	42	5,5	135



PG adapter „icosahedron“

with fixing hole Dia 8^{H7}

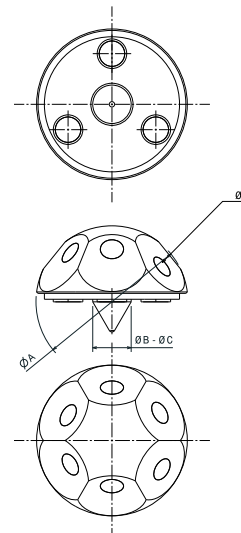
Nr.	A	B	C	
283760	44,96	42	5,5	122



PG adapter „hexahedron“

magnetic, self centering

Nr.	A	B	C	D	
283761	36	2	9	5,5	30



Versions for non-magnetic metals and plastics on request

Special types / individual codes, i.e. layout of dots, on request
Subject to technical changes